



### Construction

Close-coupled gear pumps (rotary pumps).  
Pump casing with suction and delivery connections with the same diameter and on the same axis (in-line execution).

### Applications

For fuel oil and liquids with lubricating properties.

### Operating conditions

Kinematic viscosity from 30 mm<sup>2</sup>/s (4°E) to 120 mm<sup>2</sup>/s (15°E).  
Liquid temperature up to 90 °C.  
Ambient temperature up to 40 °C.  
Total suction lift up to 4 m.  
Continuous duty.

### Motor

4-pole induction motor, 50 Hz (n = 1450 rpm).

**I 25/4E, IR 25/4E, IRR 25/4E:** three-phase 230/400 V ± 10%.

**IM 25/4E:** single-phase 230 V ± 10%.

Insulation class F.

Protection IP 54.

Execution according to IEC 34.

### Special features on request

- Other voltages.
- Frequency 60 Hz (as per 60 Hz data sheet).
- Protection IP 55.
- Higher ambient temperatures.

### Materials

Components	Materials
Pump casing	Cast iron GJL 200 EN 1561
Gears	Steel 18 Ni Cr Mo 5 UNI 8550
Shafts	Steel 18 Ni Cr Mo 5 UNI 8550
Radial shaft seal ring	Viton

### Performance n 1450 1/min

	3 ~ 230 V 400 V		1 ~ 230 V	P <sub>1</sub>	P <sub>2</sub>		n	Q	p	
	A	A			A	kW			HP	1/min
<b>I 25/4E</b>	1,4	0,8	<b>IM25/4E</b>	2,1	0,4	0,25	0,34	1450	p bar	0,6
<b>IR 25/4E</b>	2,1	1,2				0,37	0,5	1450		10
<b>IRR 25/4E</b>	3,5	2				0,75	1	1450		2
										2,5
										5

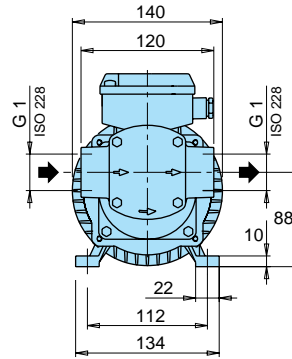
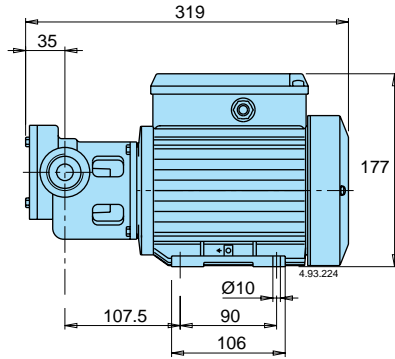
P<sub>1</sub> Max. power input.

P<sub>2</sub> Rated motor power output.

p Differential pressure.

### Dimensions and weights

- I 25/4 E:** 10 kg
- IM 25/4 E:** 11,7 kg
- IR 25/4 E:** 11,6 kg



- IRR 25/4E:** 15,8 kg

