



CM

CENTRIFUGAL CIRCULATING PUMPS WITH IN-LINE CONNECTIONS



Circulating pumps with in-line connections, suitable for civil and industrial installations for heating, air-conditioning and hot water for domestic use.

Pump body, motor support, impeller and fan cover in cast iron.

PN 16 flanged suction and delivery connections with threaded holes for control pressure gauges.

Carbon/ceramic mechanical seal.

Three-phase, four-pole, asynchronous motor with external ventilation. To protect the motor it is advisable to use a thermal overload protection complying with the regulations in force.

Operating range: from 1,5 to 360 m³/h with head up to 23 metres.

Liquid temperature range: from -15°C to +120°C.

Pumped liquid characteristics: clean, free from solids or abrasive substances, not viscous, not aggressive, not crystallised and chemically neutral.

Maximum ambient temperature: +40°C

Maximum working pressure: 16 bar (1600 kPa).

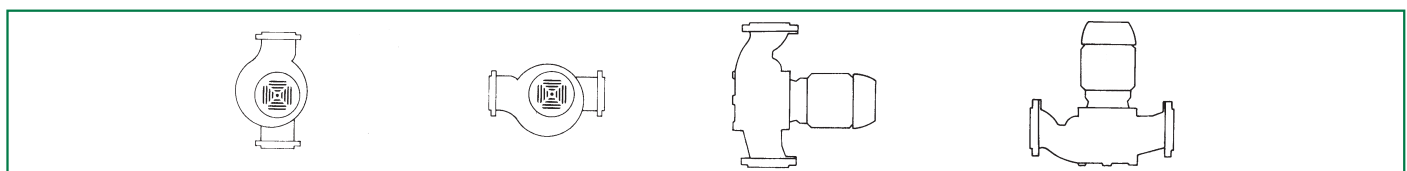
Protection level: IP 55

Insulation class: F

PN 16 counter flanges on request.

ELECTRICAL DATA

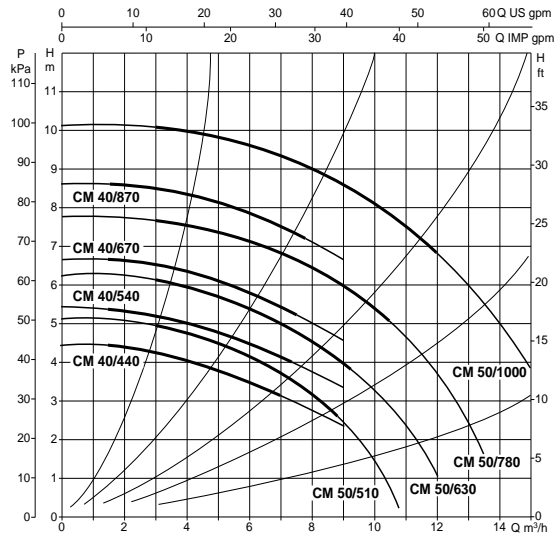
MODEL	VOLTAGE 50 Hz	MOTOR TYPE	R.P.M. n. 1/min.	P1 MAX kW	P2 NOMINAL		In A	WEIGHT Kg
					kW	HP		
CM 40/440 T	3x230-400 V ~	4 POLES	1480	0,28	0,74	1	2,1-1,2	41
CM 40/540 T	3x230-400 V ~	4 POLES	1480	0,33	0,74	1	2,1-1,2	41
CM 40/670 T	3x230-400 V ~	4 POLES	1480	0,39	0,74	1	2,2-1,3	41
CM 40/870 T	3x230-400 V ~	4 POLES	1480	0,51	0,74	1	2,2-1,3	41
CM 50/510 T	3x230-400 V ~	4 POLES	1480	0,35	0,74	1	2,1-1,2	46,6
CM 50/630 T	3x230-400 V ~	4 POLES	1480	0,50	0,74	1	2,2-1,3	46,6
CM 50/780 T	3x230-400 V ~	4 POLES	1470	0,50	0,74	1	2,2-1,3	46,6
CM 50/1000 T	3x230-400 V ~	4 POLES	1470	0,64	0,74	1	2,4-1,4	46,6
CM 65/550 T	3x230-400 V ~	4 POLES	1450	0,49	0,55	0,75	2,3-1,3	50
CM 65/650 T	3x230-400 V ~	4 POLES	1430	0,62	0,55	0,75	2,5-1,5	45
CM 65/850 T	3x230-400 V ~	4 POLES	1430	0,9	0,75	1	3-1,7	63
CM 65/960 T	3x230-400 V ~	4 POLES	1430	1,05	1,1	1,5	3,5-2	64,7
CM 65/1280 T	3x230-400 V ~	4 POLES	1430	1,7	1,5	2	5,6-3,2	71
CM 65/1400 T	3x230-400 V ~	4 POLES	1450	2,1	2,2	3	7-4	72
CM 80/560 T	3x230-400 V ~	4 POLES	1430	0,9	0,75	1	2,7-1,6	65
CM 80/650 T	3x230-400 V ~	4 POLES	1430	1,1	1,1	1,5	3,5-2	60
CM 80/900 T	3x230-400 V ~	4 POLES	1425	1,7	1,5	2	5,3-3	87
CM 80/980 T	3x230-400 V ~	4 POLES	1400	1,9	2,2	3	6,6-3,8	82
CM 80/1200 T	3x230-400 V ~	4 POLES	1425	2,6	2,2	3	8-4,6	87,5
CM 80/1330 T	3x230-400 V ~	4 POLES	1435	3,4	3	4	11-6,2	92
CM 80/1500 T	3x230-400 V ~	4 POLES	1400	4	3,7	5	13,2-7,6	94
CM 100/350 T	3x230-400 V ~	4 POLES	1400	0,65	0,55	0,75	2,3-1,4	60
CM 100/550 T	3x230-400 V ~	4 POLES	1430	1,05	1,1	1,5	3,5-2	75
CM 100/750 T	3x230-400 V ~	4 POLES	1425	1,55	1,5	2	4,9-2,8	89
CM 100/950 T	3x230-400 V ~	4 POLES	1425	2,35	2,2	3	7,5-4,3	91
CM 100/1500 T	3x230-400 V ~	4 POLES	1400	4,75	3,7	5	15-8,6	95
CM 100/1800 T	3x400 V ~ Δ*	4 POLES	1450	6,6	5,5	7,5	12,4	140
CM 100/2000 T	3x400 V ~ Δ*	4 POLES	1450	7,95	7,4	10	14,5	150
CM 125/880 T	3x230-400 V ~	4 POLES	1400	4,1	3,7	5	13,5-7,6	125
CM 125/1500 T	3x400 V ~ Δ*	4 POLES	1450	8,4	7,5	10	15	173
CM 125/2400 T	3x400 V ~ Δ*	4 POLES	1450	12	11	15	22	225
CM 150/1000 T	3x400 V ~ Δ*	4 POLES	1450	5	5,5	7,5	10,5	190
CM 150/1250 T	3x400 V ~ Δ*	4 POLES	1450	7,8	7,4	10	14,5	206,5
CM 150/1700 T	3x400 V ~ Δ*	4 POLES	1420	12,3	11	15	22	292
CM 150/2100 T	3x400 V ~ Δ*	4 POLES	1440	16,8	15	20	29	292
CM 150/2350 T	3x400 V ~ Δ*	4 POLES	1450	21,1	18,5	25	35	327



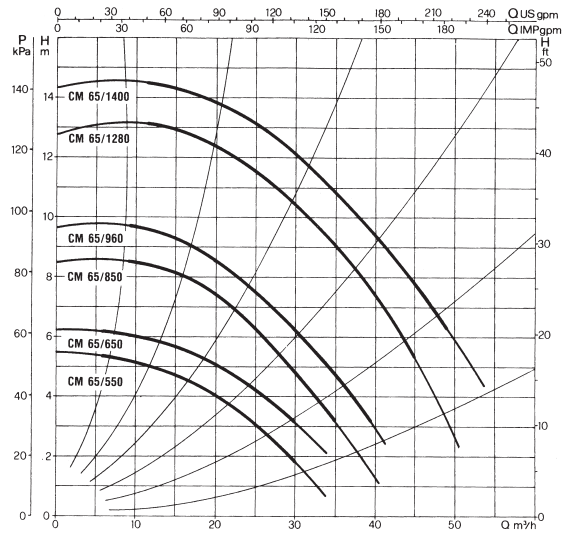
Installation: with the motor in a horizontal or vertical position as long as it is above the pump.

CM - HYDRAULIC DATA

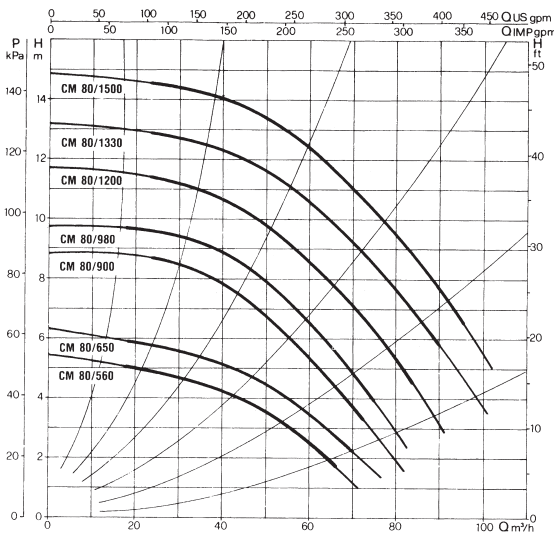
CM 40 - CM 50



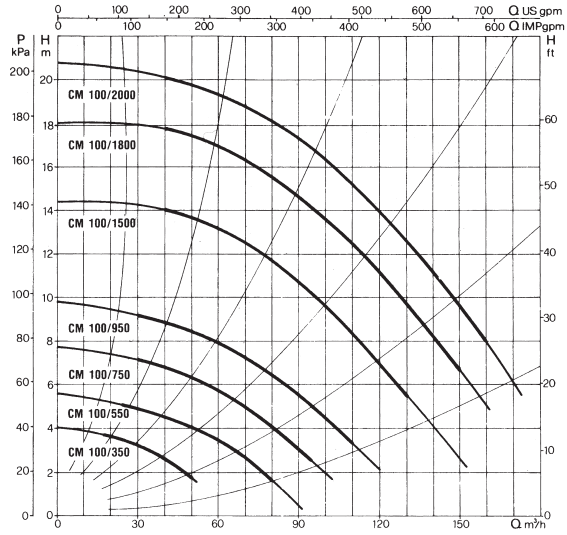
CM 65



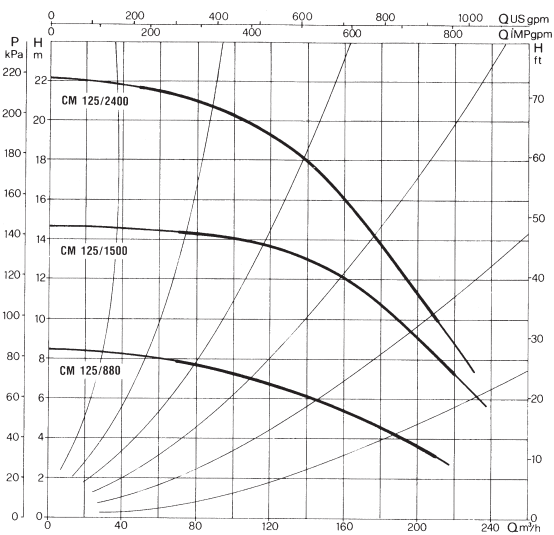
CM 80



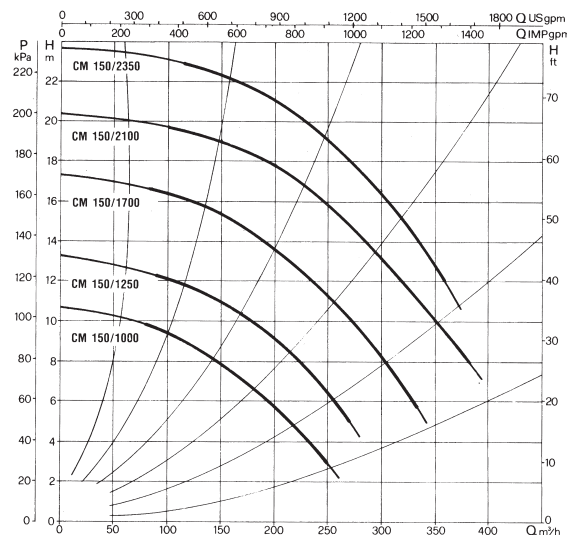
CM 100



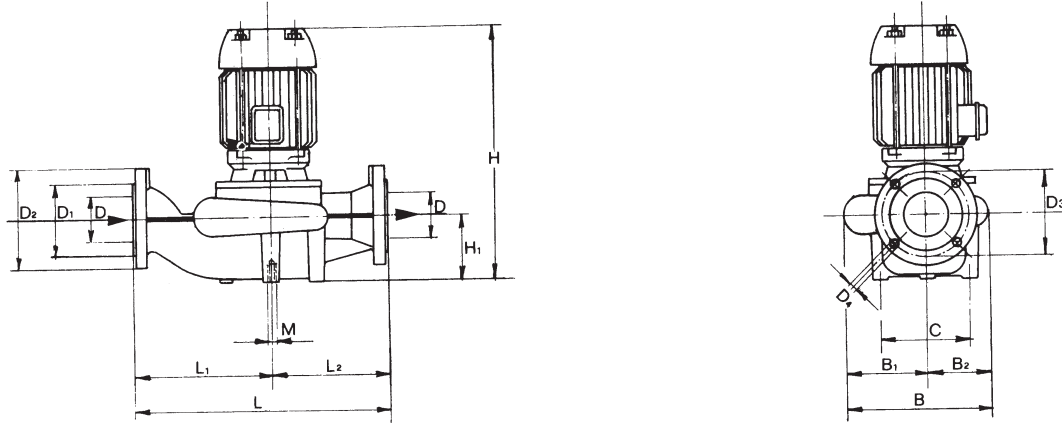
CM 125



CM 150



CM DIMENSIONS



MODEL	L	L1	L2	B	B1	B2	C	H	H1	D	D1	D2	D3	D4	M
CM 40/440 T	390	200	190	231	118	113	85	453	95	40	88	110	150	4 holes Ø 18	12
CM 40/540 T	390	200	190	231	118	113	85	453	95	40	88	110	150		12
CM 40/670 T	390	200	190	231	118	113	85	453	95	40	88	110	150		12
CM 40/870 T	390	200	190	231	118	113	85	453	95	40	88	110	150		12
CM 50/510 T	425	225	200	233	120	113	100	463	105	50	102	125	165		12
CM 50/630 T	425	225	200	233	120	113	100	463	105	50	102	125	165		12
CM 50/780 T	425	225	200	233	120	113	100	463	105	50	102	125	165		12
CM 50/1000 T	425	225	200	233	120	113	100	463	105	50	102	125	165		12
CM 65/550 T	475	237,5	237,5	230	125	105	125	419	110	65	122	185	145		16
CM 65/650 T	475	237,5	237,5	230	125	105	125	419	110	65	122	185	145		16
CM 65/850 T	475	237,5	237,5	283	150	133	125	438	110	65	122	185	145		16
CM 65/960 T	475	237,5	237,5	283	150	133	125	438	110	65	122	185	145		16
CM 65/1280 T	475	237,5	237,5	283	150	133	125	515	110	65	122	185	145	16	
CM 65/1400 T	475	237,5	237,5	283	150	133	125	515	110	65	122	185	145	16	
CM 80/560 T	525	262,5	262,5	273	152	121	148	454	125	80	138	200	160	8 holes Ø 18	16
CM 80/650 T	525	262,5	262,5	273	152	121	148	454	125	80	138	200	160		16
CM 80/900 T	525	262,5	262,5	320	173	147	148	545	125	80	138	200	160		16
CM 80/980 T	525	262,5	262,5	320	173	147	148	545	125	80	138	200	160		16
CM 80/1200 T	525	262,5	262,5	320	173	147	148	545	125	80	138	200	160		16
CM 80/1330 T	525	262,5	262,5	320	173	147	148	545	125	80	138	200	160		16
CM 80/1500 T	525	262,5	262,5	320	173	147	148	545	125	80	138	200	160		16
CM 100/350 T	550	275	275	279	154	125	148	459	140	100	158	220	180		16
CM 100/550 T	550	300	250	320	175	145	202	479	140	100	158	220	180	16	
CM 100/750 T	550	300	250	320	175	145	202	553	140	100	158	220	180	16	
CM 100/950 T	550	300	250	320	175	145	202	553	140	100	158	220	180	16	
CM 100/1500 T	550	300	250	340	182	158	177	574	164	100	158	220	180	16	
CM 100/1800 T	630	350	280	376	199	177	195	665	175	100	158	220	180	16	
CM 100/2000 T	630	350	280	376	199	177	195	703	175	100	158	220	180	16	
CM 125/880 T	630	350	280	386	154	125	148	459	140	125	188	250	210	16	
CM 125/1500 T	630	350	280	386	175	145	202	479	140	125	188	250	210	16	
CM 125/2400 T	630	350	280	404	175	145	202	553	140	125	188	250	210	16	
CM 150/1000 T	690	375	315	417	231	186	270	698	200	150	212	285	240	8 holes Ø 22	16
CM 150/1250 T	690	375	315	417	231	186	270	736	200	150	212	285	240		16
CM 150/1700 T	755	400	355	467	251	216	270	867	225	150	212	285	240		16
CM 150/2100 T	755	400	355	467	251	216	270	911	225	150	212	285	240		16
CM 150/2350 T	755	400	355	467	251	216	270	925	225	150	212	285	240		16



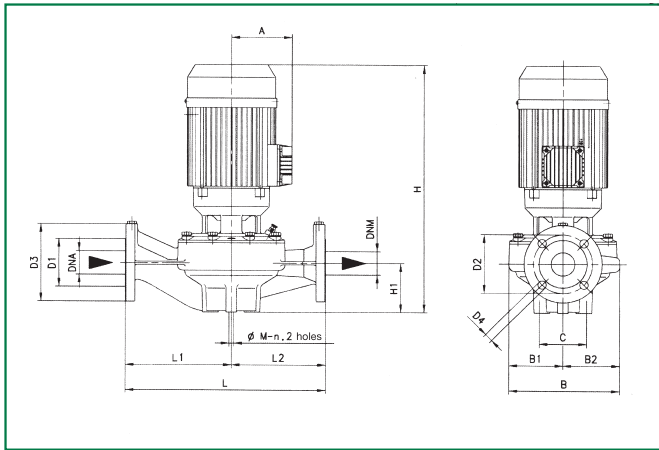
CP

CENTRIFUGAL CIRCULATING PUMPS WITH IN-LINE CONNECTIONS

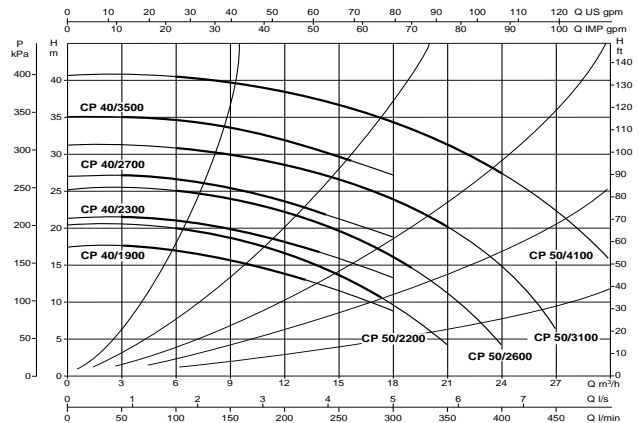


Circulating pumps with in-line connections, suitable for civil and industrial installations for heating, air-conditioning and hot water for domestic use. Pump body and motor support in cast iron. PN 16 flanged suction and delivery connections with threaded holes for control pressure gauges. Technopolymer impeller and carbon/ceramic mechanical seal. Three-phase, four-pole, asynchronous motor with external ventilation. To protect the motor it is advisable to use a thermal overload protection complying with the regulations in force.

Operating range: from 3 to 24 m³/h with head up to 40 metres.
Liquid temperature range: from -15°C to +120°C.
Pumped liquid characteristics: clean, free from solids or abrasive substances, not viscous, not aggressive, not crystallised and chemically neutral.
Maximum ambient temperature: +40°C
Maximum working pressure: 16 bar (1600 kPa).
Protection level: IP 55
Insulation class: F
 PN 16 counter flanges on request.

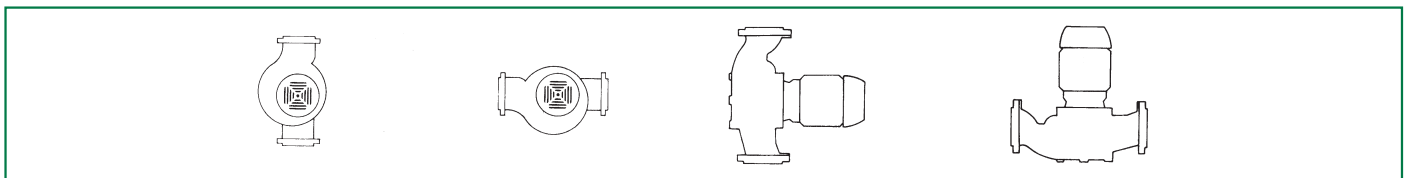


CP 40 - CP 50



MODEL	VOLTAGE 50 Hz	MOTOR TYPE	R.P.M. n. 1/min.	P1 MAX kW	P2 NOMINAL		In A	WEIGHT Kg
					kW	HP		
CP 40/1900 T	3x230-400 V ~	2 POLES	2910	1,1	0,75	1	4,5-2,6	41
CP 40/2300 T	3x230-400 V ~	2 POLES	2870	1,45	1,1	1,5	5,2-3	41
CP 40/2700 T	3x230-400 V ~	2 POLES	2850	1,89	1,5	2	6,4-3,7	43,5
CP 40/3500 T	3x230-400 V ~	2 POLES	2880	2,53	2,21	3	9-5,2	48,8
CP 50/2200 T	3x230-400 V ~	2 POLES	2870	1,42	1,1	1,5	5-2,9	46,6
CP 50/2600 T	3x230-400 V ~	2 POLES	2860	1,89	1,5	2	6,2-3,6	49,5
CP 50/3100 T	3x230-400 V ~	2 POLES	2870	2,51	2,2	3	9-5,2	52,8
CP 50/4100 T	3x230-400 V ~	2 POLES	2910	3,8	4	5,5	7,4	61

Model	A	B	B1	B2	C	DNA	DNM	D1	D2	D3	D4	H	H1	L	L1	L2	M
CP 40/1900 T	115	231	118	113	85	40	40	88	110	150	4 holes 18x23	453	95	390	200	190	2 holes Ø 12
CP 40/2300 T	115	231	118	113	85	40	40	88	110	150		453	95	390	200	190	
CP 40/2700 T	115	231	118	113	85	40	40	88	100	150		453	95	390	200	190	
CP 40/3500 T	118	231	118	113	85	40	40	88	100	150		527	95	390	200	190	
CP 50/2200 T	115	233	120	113	100	50	50	102	125	165		463	105	425	225	200	
CP 50/2600 T	115	233	120	113	100	50	50	102	125	165		463	105	425	225	200	
CP 50/3100 T	118	233	120	113	100	50	50	102	125	165		537	105	425	225	200	
CP 50/4100 T	130	233	120	113	100	50	50	102	125	165		537	105	425	225	200	



Installation: With the motor in a horizontal or vertical position as long as it is above the pump.